



**DEPARTMENT OF NATURAL RESOURCES  
STATE OF MICHIGAN  
TIMBER SALE PROSPECTUS #7423**

**SCHEDULED SALE DATE AND TIME: 10:00 a.m. (local time) on May 21, 2024.**

**LOCATION: ATLANTA MGMT UNIT, 13501 M 33, ATLANTA, MI 49709.**

**CONTACT NAME: Matt Foster**

**PHONE NUMBER: (989) 619-5921**

**PROSPECTUS NOTE:** The bidder is advised to inspect the sale area and review the location, estimated volumes, operating costs and contract terms of proposed sales. Please be aware that some landowners may request 60 days or more notice for access across their land.

Notice is hereby given that bids will be received by the Unit Manager, ATLANTA MANAGEMENT UNIT, for certain timber on the following described lands:

Stevens Springs Eternal (54-015-23) / T31N, R02E, SEC. 13, S1/2SE.

T31N, R02E, SEC. 24, N1/2NE, SENE, SE.

T31N, R02E, SEC. 25, N1/2NE.

T31N, R03E, SEC. 19, SWNW, NWSW.

Montmorency County, Advertised Price \$157,345.00, 134.4 Acres, Aspen, Hardwood.

SALE NOTE: Oak wilt restrictions over the entire Sale Area.

A recreation site such as a trail, pathway, or campground is within the sale area or the vicinity.  
Certain restrictions/specifications may be applicable including time restrictions.

## TIMBER SALE INFORMATION

Stevens Springs Eternal (54-015-23)

T31N, R02E, SEC. 13; T31N, R02E, SEC. 24; T31N, R02E, SEC. 25; T31N, R03E, SEC. 19.

Montmorency County (Advertised Price \$157,345.00)

SALE NOTE: Oak wilt restrictions over the entire Sale Area.

A recreation site such as a trail, pathway, or campground is within the sale area or the vicinity. Certain restrictions/specifications may be applicable including time restrictions.

A timber sale contract for this lump sum, sealed bid timber sale will be awarded to the responsible bidder offering the highest sealed bid price. All units of volume listed below were estimated using the Inventory Manager computer program and the new Michigan taper model. Bids must be at or above the following advertised price for each product and species:

<u>PRODUCTS &amp; SPECIES</u>	<u>ESTIMATED UNITS*</u>	<u>ADVERTISED PRICE</u>
Sawtimber		
Black/Red (Hybrid) Oak	82.6 MBF	\$ 124.00 / MBF
Mixed Aspen	185.7 MBF	\$ 111.00 / MBF
Red Maple	10.7 MBF	\$ 77.00 / MBF
Red Oak	182.1 MBF	\$ 195.00 / MBF
Red Pine	10.7 MBF	\$ 139.00 / MBF
White Pine	49.7 MBF	\$ 127.00 / MBF
Pulpwood		
Balsam Fir	172 Cords	\$ 20.20 / Cord
Mixed Aspen	1,739 Cords	\$ 25.00 / Cord
Mixed Hardwood	527 Cords	\$ 24.90 / Cord
Mixed Oak	540 Cords	\$ 33.75 / Cord
Paper Birch	34 Cords	\$ 16.15 / Cord
Red Pine	15 Cords	\$ 40.20 / Cord
Tamarack	17 Cords	\$ 20.10 / Cord
White Pine	92 Cords	\$ 27.90 / Cord

\* The total volume is statistically estimated within plus (+) or minus (-) 9.64 percent. There are an estimated 4,634 cords on this timber sale, plus or minus 447 cords at the 95% confidence level. The estimated units are final and not subject to adjustment. Prospective bidders are urged to examine this timber and to make their own estimates of quantity and quality.

### **BOND AND PAYMENT SCHEDULE:**

1. A bond in the amount of \$7,867.25 to insure faithful performance of the conditions of the contract will be deposited by the successful bidder within 21 days of the sale award.
2. Cutting in any sale or unit without the required advance payment would be considered a trespass.
3. Total payment must be paid in advance or according to the following schedule:
  - (a) Ten percent (10%) of the sale value must be paid within 21 days of the sale award.
  - (b) The 10% down payment will be credited towards the first unit cut.
  - (c) Payment for each of the following units must be made before cutting begins in that unit:

<u>PAYMENT UNIT NUMBER</u>	<u>PERCENT OF TOTAL SALE VALUE</u>
01	13.6%
02	15.8%
03	20.2%
04	28.7%
05	9.6%
06	12.1%

4. If no cutting takes place, the 10% down payment will not be refunded.
5. Operations on the contract issued will terminate on 06/30/2028.

### **SALE STATISTICS**

Volumes were calculated in cubic feet using the Michigan taper model. Cubic foot volume includes all wood inside bark for the product indicated. For display purposes, cubic feet were converted to cords and MBF using a simple conversion factor, e.g. 79 cubic feet per cord and 185 cubic feet per MBF. The cubic foot volumes are precise; the cords and MBF volumes are not. Cubic foot volume cannot be directly converted to cords or boards with precision.

SALE VOLUMES

The total estimated sale volume may not equal the sum of the species/products due to the nature of statistical calculations associated with double sampling methodology.

VOLUME			STATISTICAL RANGE IN CORDS	
TOTAL CUBIC FEET	TOTAL CORDS	PERCENT ERROR	MINIMUM	MAXIMUM
366,070	4,634	9.64%	4,187	5,081

VDU VOLUMES

A VDU is a Volume Determination Unit. Volumes and their associated statistics are calculated at the VDU level and summarized to the sale level. There is often a one to one relationship between a VDU and a Payment Unit, but not always, depending on the cruise design. Refer to the VDU TO PAYMENT UNIT table.

	VOLUME			RANGE IN CORDS	
VDU	TOTAL CUBIC FEET	TOTAL CORDS	PERCENT ERROR	MINIMUM	MAXIMUM
35	236,214	2,990	11.75%	2,639	3,341
76	47,620	603	24.17%	457	748
99	82,236	1,041	19.14%	842	1,240
TOTAL:	366,070	4,634		3,937	5,330

VDU TO PAYMENT UNIT

When a VDU is associated with more than one Payment Unit (PU), the VDU volumes are assigned to the PU based on acres of the VDU within the PU.

VDU	VDU ACRES	PU	PU ACRES
35	76.0	1	10.6
		2	7.5
		3	24.0
		4	33.9
76	24.1	1	7.9
		2	16.2
99	34.3	5	15.2
		6	19.1
TOTAL:	134.4		134.4

**DESCRIPTION OF TIMBER BY PU (PU)**

PU	MARKET GROUP	PRODUCT	QUANTITY	UNIT	ACRES	ADVERTISE PRICE
1	Black/Red (Hybrid	Sawtimber	25.5	MBF	18.5	\$21,381.40
	Mixed Aspen		23.5	MBF		
	<i>B. T. Aspen</i>		17.1	<i>MBF</i>		
	<i>Quaking Aspen</i>		6.4	<i>MBF</i>		
	Red Maple		0.2	MBF		
	Red Oak		21.2	MBF		
	Balsam Fir	Pulpwood	20	Cords		
	Mixed Aspen		213	Cords		
	<i>B. T. Aspen</i>		117	<i>Cords</i>		
	<i>Quaking Aspen</i>		96	<i>Cords</i>		
	Mixed Hardwood		49	Cords		
	<i>Black Cherry</i>		1	<i>Cords</i>		
	<i>Red Maple</i>		43	<i>Cords</i>		
	<i>Sugar Maple</i>		4	<i>Cords</i>		
	<i>White Ash</i>		1	<i>Cords</i>		
	Mixed Oak		130	Cords		
	<i>/Red (Hybrid) Oak</i>		120	<i>Cords</i>		
	<i>Red Oak</i>		10	<i>Cords</i>		
	Paper Birch		4	Cords		
	Tamarack		3	Cords		
	<i>Tamarack</i>	<i>Sawtimber</i>	0.4	<i>MBF</i>		
	<i>Tamarack</i>	<i>Pulpwood</i>	2	<i>Cords</i>		
2	Black/Red (Hybrid	Sawtimber	50.7	MBF	23.7	\$24,861.50
	Mixed Aspen		16.7	MBF		
	<i>B. T. Aspen</i>		12.1	<i>MBF</i>		
	<i>Quaking Aspen</i>		4.6	<i>MBF</i>		
	Red Maple		0.1	MBF		
	Red Oak		15.0	MBF		
	Balsam Fir	Pulpwood	15	Cords		
	Mixed Aspen		162	Cords		
	<i>B. T. Aspen</i>		94	<i>Cords</i>		
	<i>Quaking Aspen</i>		68	<i>Cords</i>		
	Mixed Hardwood		46	Cords		
	<i>Red Maple</i>		43	<i>Cords</i>		
	<i>Sugar Maple</i>		3	<i>Cords</i>		
	Mixed Oak		243	Cords		
	<i>/Red (Hybrid) Oak</i>		236	<i>Cords</i>		
	<i>Red Oak</i>		7	<i>Cords</i>		
	Paper Birch		3	Cords		
	Tamarack		2	Cords		
	<i>Tamarack</i>	<i>Sawtimber</i>	0.3	<i>MBF</i>		
	<i>Tamarack</i>	<i>Pulpwood</i>	1	<i>Cords</i>		
3	Black/Red (Hybrid	Sawtimber	2.7	MBF	24.0	\$31,853.25
	Mixed Aspen		53.4	MBF		
	<i>B. T. Aspen</i>		38.8	<i>MBF</i>		
	<i>Quaking Aspen</i>		14.6	<i>MBF</i>		
	Red Maple		0.4	MBF		
	Red Oak		48.1	MBF		
	Balsam Fir	Pulpwood	43	Cords		
	Mixed Aspen		462	Cords		
	<i>B. T. Aspen</i>		244	<i>Cords</i>		
	<i>Quaking Aspen</i>		218	<i>Cords</i>		
	Mixed Hardwood		87	Cords		
	<i>Black Cherry</i>		1	<i>Cords</i>		
	<i>Red Maple</i>		76	<i>Cords</i>		

**DESCRIPTION OF TIMBER BY PU (PU), CON'T**

PU	MARKET GROUP	PRODUCT	QUANTITY	UNIT	ACRES	ADVERTISE PRICE
3 con't	<i>Sugar Maple</i>	<i>Pulpwood</i>	9	<i>Cords</i>		
	<i>White Ash</i>		1	<i>Cords</i>		
	Mixed Oak		40	Cords		
	<i>/Red (Hybrid) Oak</i>		18	<i>Cords</i>		
	<i>Red Oak</i>		22	<i>Cords</i>		
	Paper Birch		9	Cords		
	Tamarack		5	Cords		
	<i>Tamarack</i>	<i>Sawtimber</i>	0.9	<i>MBF</i>		
	<i>Tamarack</i>	<i>Pulpwood</i>	3	<i>Cords</i>		
4	Black/Red (Hybrid)	Sawtimber	3.7	MBF	33.9	\$44,994.40
	Mixed Aspen		75.4	MBF		
	<i>B. T. Aspen</i>		54.8	<i>MBF</i>		
	<i>Quaking Aspen</i>		20.6	<i>MBF</i>		
	Red Maple		0.6	MBF		
	Red Oak		67.8	MBF		
	Balsam Fir	Pulpwood	60	Cords		
	Mixed Aspen		653	Cords		
	<i>B. T. Aspen</i>		345	<i>Cords</i>		
	<i>Quaking Aspen</i>		308	<i>Cords</i>		
	Mixed Hardwood		124	Cords		
	<i>Black Cherry</i>		2	<i>Cords</i>		
	<i>Red Maple</i>		108	<i>Cords</i>		
	<i>Sugar Maple</i>		12	<i>Cords</i>		
	<i>White Ash</i>		2	<i>Cords</i>		
	Mixed Oak		57	Cords		
	<i>/Red (Hybrid) Oak</i>		25	<i>Cords</i>		
	<i>Red Oak</i>		32	<i>Cords</i>		
	Paper Birch		13	Cords		
	Tamarack		7	Cords		
	<i>Tamarack</i>	<i>Sawtimber</i>	1.2	<i>MBF</i>		
	<i>Tamarack</i>	<i>Pulpwood</i>	5	<i>Cords</i>		
5	Mixed Aspen	Sawtimber	7.4	MBF	15.2	\$15,182.65
	<i>B. T. Aspen</i>		2.2	<i>MBF</i>		
	<i>Quaking Aspen</i>		5.2	<i>MBF</i>		
	Red Maple		4.2	MBF		
	Red Oak		13.3	MBF		
	Red Pine		4.7	MBF		
	White Pine		22.0	MBF		
	Balsam Fir	Pulpwood	15	Cords		
	Mixed Aspen		110	Cords		
	<i>B. T. Aspen</i>		20	<i>Cords</i>		
	<i>Quaking Aspen</i>		90	<i>Cords</i>		
	Mixed Hardwood		98	Cords		
	<i>Black Cherry</i>		5	<i>Cords</i>		
	<i>Red Maple</i>		93	<i>Cords</i>		
	Mixed Oak		31	Cords		
	<i>Red Oak</i>		31	<i>Cords</i>		
	Paper Birch		2	Cords		
	Red Pine		7	Cords		
	White Pine		41	Cords		
6	Mixed Aspen	Sawtimber	9.3	MBF	19.1	\$19,071.80
	<i>B. T. Aspen</i>		2.7	<i>MBF</i>		
	<i>Quaking Aspen</i>		6.6	<i>MBF</i>		
	Red Maple		5.2	MBF		
	Red Oak		16.7	MBF		

**DESCRIPTION OF TIMBER BY PU (PU), CON'T**

PU	MARKET GROUP	PRODUCT	QUANTITY	UNIT	ACRES	ADVERTISE PRICE
6 con't	Red Pine	Sawtimber	6.0	MBF		
	White Pine		27.7	MBF		
	Balsam Fir	Pulpwood	19	Cords		
	Mixed Aspen		139	Cords		
	<i>B. T. Aspen</i>		25	<i>Cords</i>		
	<i>Quaking Aspen</i>		114	<i>Cords</i>		
	Mixed Hardwood		123	Cords		
	<i>Black Cherry</i>		7	<i>Cords</i>		
	<i>Red Maple</i>		116	<i>Cords</i>		
	Mixed Oak		39	Cords		
	<i>Red Oak</i>		39	<i>Cords</i>		
	Paper Birch		3	Cords		
	Red Pine		8	Cords		
	White Pine		51	Cords		
TOTAL:			521.5	MBF		
TOTAL:			3,136	Cords		

## **Sale Specific Conditions & Requirements**

**Sale Name: Stevens Springs Eternal**

**Sale Number: 54-015-23 Seq#: 2**

### **1 - Sale Area**

#### **1.2 - Boundaries**

##### **1.2.1 - Painted boundaries (9/19)**

The sale boundary and Payment Unit boundaries are marked and identified by red and yellow paint, along with a road. Exterior sale boundary lines against state are marked with red paint, with the exception of the partial western boundary of Payment Unit 1, which is unpainted and represented by Stevens Spring Road (see Timber Sale Map). Interior Payment Unit boundaries are marked with yellow paint, with the exception of Stevens Spring Road, which is an unpainted Payment Unit boundary between Payment Units 1, 3, & 4. The painted boundary line trees are not Included Timber and are to be protected. Yellow painted trees designating an interior Payment Unit boundary are only to be cut when all surrounding Payment Units have been paid.

### **2 - Timber Specifications**

#### **2.1 - Included Timber**

##### **2.1.1 - Clearcut unit(s) with unmerchantable trees (6/14)**

Within Payment Unit(s) 1-4, cut all trees that are two (2) inches or more at DBH, except do not cut any red pine, white pine, or white spruce, which are not included timber and are to be protected.

##### **2.1.2 - Clearcut unit(s) w/o unmerchantable trees (8/11)**

Within Payment Unit(s) 5 & 6, cut all trees which meet minimum piece specifications in 2.2 Utilization. Do not cut trees marked with green paint. Special protection trees identified in accordance with condition 3.4.2, within clearcutting unit boundaries, are not Included Timber and are to be protected.

#### **2.2 - Utilization**

##### **2.2.6 - Roundwood operation required (3/21)**

The skidding of whole trees or tree segments with limbs attached is prohibited within Payment Units 1, 4, 5, & 6. All products must be produced as roundwood and forwarded to existing roads or landing areas in final product length. Within Payment Units 5 & 6, trees must be harvested with in-woods processor (feller bunching harvester will not be allowed) in order to retain existing understory.

### **3 - Payments**

#### **3.3 - Pre-measured Sales**

##### **3.3.4 - Dividing payment units (7/14)**

Payment Unit(s) exceeding \$25,000 in value may be divided at the request of the Purchaser and upon approval of the Unit Manager. Dividing Payment Units is a contract modification which requires a Timber Sale Contract Amendment. There will be only one division per Payment Unit.

#### **3.4 - Damaged Timber**

##### **3.4.1 - Damaged timber (7/16)**

General Condition and Requirement 3.4 Damaged Timber, defines liquidated damages for undesignated live merchantable trees which are cut or injured. No damage is acceptable to undesignated live merchantable trees, which are red pine, white pine, and white spruce. Within the Sale Area, if more than 5% of trees (> 4.5" DBH) within a specified area of the sale are damaged, liquidated damages will be assessed for all trees damaged. Rates will be in accordance with General Condition and Requirement 3.4 Damaged Timber.

##### **3.4.2 - Special Protection Trees (4/14)**

The Purchaser shall not cut live or dead special protection trees within cutting units or clearings. Special protection trees are pine that are thirty (30) inches or more at DBH, or any trees marked with green paint. If the Purchaser's operations have cut

or damaged special protection trees through carelessness, the Purchaser shall pay \$200 as fixed, agreed and liquidated damages for each special protection tree cut or damaged. Such payment does not constitute ownership of the undesignated timber.

## **4 - Transportation**

### **4.1 - Construction**

#### **4.1.3 - Slash and earthen piles (8/04)**

Piles or windrows of earth along roads and landings that have been widened or constructed shall be leveled. Slash from road maintenance or construction, including stumps, shall be dispersed throughout the sale.

#### **4.1.6 - Road construction (1/09)**

Improvements of existing roads shall be done in such a way as to minimize the environmental and visual impacts.

Merchantable trees shall be cut and utilized unless otherwise directed. Non-merchantable trees shall be severed and laid flat on the ground. Slash shall be scattered, and not left in windrows and kept a minimum of 10 feet back from the road edge.

Stumps shall be set upright, not left on edge, and be moved at least 10 feet away from the road edge. Disturbed soil shall be feathered into the woods and not left in berms or windrows.

### **4.2 - Maintenance**

#### **4.2.2 - Fill material (4/07)**

To maintain roads, fill material may be needed in areas where "holes" exist or may be expected to develop. This fill material should be placed before trucking begins. Acceptable fill material must not contain organic matter or clay.

#### **4.2.5 - Two wheel drive condition (2/04)**

All existing trail roads on and adjacent to the sale area must be passable by two-wheel drive traffic for the duration of the sale.

## **5 - Operations**

### **5.1 - Notification**

#### **5.1.1 - Pre-sale conference (10/16)**

A pre-sale conference between the Purchaser and sale administrator is required prior to beginning any operations to determine landing and road locations. The Unit Manager or his/her representative must be contacted at least 10 days in advance to schedule the conference.

#### **5.1.3 - Well heads and natural gas pipelines (11/15)**

The Purchaser is responsible for contacting the gas or pipeline company 30 days prior to operating equipment in the vicinity of well heads or natural gas pipelines. Contact Riverside Energy Michigan, LLC at 231-995-4000 or 989-705-7665 and VCP Michigan, LLC at 989-732-8499.

#### **5.1.4 - Post-sale conference (10/16)**

A post-sale conference on site between the Purchaser and sale administrator is required 5 days prior to the completion of active logging operations to determine clean-up and repair of landings, road edges, and the fulfillment of other contract specifications.

### **5.2 - Conduct of Operations**

#### **5.2.1 - Slash**

##### **5.2.1.11 - Slash for reforestation (3/21)**

To facilitate reforestation and to protect oak stump sprout regeneration from browsing, chipping or removal of treetops is not permitted in Payment Units 1-4. In addition, oak tops/slash are to be placed high and wide centered over harvested oak stumps to deter deer browse.

#### **5.2.2 - Hazard Trees/Snags**

##### **5.2.2.1 - Den trees (10/16)**

Obvious hollow and/or den trees shall be protected and left standing unless they are a safety hazard.



### 5.2.3 - Operating Restrictions

#### 5.2.3.1 - Operating restrictions (9/11)

Within Payment Unit(s) 1, & 4-6, unless changed by written agreement, cutting, skidding, and hauling are limited to dry summer and frozen winter conditions. This restriction is to protect soils on slopes when they are most susceptible to rutting.

#### 5.2.3.4 - Oak wilt restriction, no exceptions (1/18)

Within Payment Units 1 & 4, cutting, skidding, hauling within the sale and brushing of access roads to the sale are not permitted during the period of April 15 to July 15. No exceptions will be granted. This is necessary to reduce the spread of oak wilt.

#### 5.2.3.5 - Oak wilt restriction (1/18)

Within Payment Units 2, 3, 5, & 6, unless changed by written agreement, cutting, skidding, hauling within the sale and brushing of access roads to the sale are not permitted during the period of April 15 to July 15. Operations may be allowed if specific steps are taken to prevent damaging uncut oak during the high risk period. Those steps may include completing all road brushing before April 15th and clearing a tree-length buffer along uncut oak cover before April 15th. This is necessary to reduce the spread of oak wilt. For more information, contact the Unit Manager or his/her representative.

#### 5.2.3.11 - Coppice regeneration protection (4/10)

Timber harvesting in any Payment Unit must be completed before significant deciduous sprouting occurs in that Payment Unit so as to minimize damage to the new regeneration. Any post harvest operations, such as chipping, must be completed before sprouting of regeneration occurs. If it is anticipated that chipping will be delayed, then tops shall be carried to one central location or left unchipped. The Unit Manager or his/her representative may cease such operations if sprouting occurs before the operation is complete.

### 5.2.4 - Dead and Down Creation

#### 5.2.4.7 - Dead and down creation: hare, grouse, deer and other species (5/15)

To improve horizontal cover habitat for snowshoe hare, grouse, deer, and other species, the Purchaser is to push over trees painted in orange. These trees should be tipped over with the root ball still attached so the base of the tree is suspended off the ground. The crown of the fallen tree should be at or near ground level after it is pushed over. If it is impossible or impractical to push these trees over, they may be severed or partially severed at the stump. Whenever possible the stem of the tree should rest above ground level. In addition, trees indicated with an orange painted R are located approximately every 400 feet along the wetland edge. These trees must be pushed over like the previously described trees painted in orange and also have an accumulation of slash and tops placed over the tree to create a cavity for rabbits.

#### 5.2.32 - Decking/landing restoration (9/13)

All decking and landing areas must have the surface area restored to a condition equal to or better than before. This is to ensure the proper regeneration of the stand. Wood debris, chips and "cookies" from trimmings must be removed or scattered away from landing and loading areas and may not be windrowed on the edge.

#### 5.2.39 - ORV trail/route protection (4/18)

The Atlanta ORV Trail/Route is shown on the Timber Sale Map. Do not cut trees or damage posts with yellow ORV markers. All stumps within 5 feet of the trail must be cut flush with the ground. Maintain a 20-foot-wide slash, debris, and rut free zone daily using the ORV trail or route as the centerline. Do not run equipment down the ORV trail or route. Skidding across the trail or route may only occur in locations approved by the Sale Administrator.

#### 5.2.41 - Snowmobile trail protection (9/11)

The LP-9 snowmobile trail and the Atlanta ORV Route share the same alignment and are shown on the Timber Sale Map. Do not cut or damage posts with orange trail markers or traffic control signs. If the trail is used, it must be maintained and restored to a condition equal to or better than before the sale. The road maintenance/restoration must be done prior to December 1. If the trail is used for hauling, it must be graded to the satisfaction of the Unit Manager or his/her representative prior to December 1. If the trail road is to be used for hauling during the snowmobile season, then a snow-covered base must be left on the trail. The snowmobile trail may only be crossed at right angles. Maintain a 20-foot-wide slash, debris, and rut free zone daily using the snowmobile trail as the centerline. No decking of forest products will be permitted along the snowmobile trail. All stumps within 20 feet of the snowmobile trail must be cut at ground level.

## 5.4 - Soil Protection

### 5.4.1 - Rutting restriction, general (7/16)

Operations are to cease immediately if equipment and weather conditions result in rutting of roads and/or skid trails which is 12 inches or greater in depth and 50 feet in length. The Unit Manager or his/her representative may restrict hauling and/or skidding if ruts exceed the specified depth. With the Unit Manager or his/her representative's approval, the Purchaser may return to the area when the risk of rutting has decreased.

### 5.4.2 - Skid trails (2/04)

Skid trails up and down slopes should be avoided. If however this is unavoidable, these trails will be left in a non-erodible condition using water bars, logs, and slash. Placing of slash on these skid trails while logging is ongoing may alleviate need for any further action. At the direction of the sale administrator, seed, fertilizer, and mulch may also be required.

## 5.8 - Protection of Endangered Species

### 5.8.5 - Protection of raptor nests (3/13)

All trees with raptor nests will be protected if found during harvesting operations. Notification will be made to the Unit Manager or his/her representative who will notify the Wildlife Biologist so an on-site evaluation and recommendation can be made, if necessary.

## 6 - Safety and Fire Prevention

## 6.2 - Signing

### 6.2.2 - Snowmobile trail posting (10/20)

The Purchaser is responsible for posting and maintaining caution signs on the LP-9 snowmobile trail prior to beginning operations during the snowmobile season (approximately December 1 to March 31). The trail must be posted at appropriate distances from the Sale Area to warn of logging activity and truck traffic. Signs must be removed when harvest operations are suspended or completed. The Purchaser will provide these signs.

### 6.2.3 - Recreational trail posting (10/20)

The Purchaser is responsible for posting and maintaining caution signs on the Atlanta ORV Trail/Route prior to beginning operations. The trail must be posted at appropriate distances from the Sale Area to warn of logging activity and truck traffic at both ends of the trail. Signs must be removed when harvest operations are suspended or completed. The Purchaser will provide these signs.



## TIMBER SALE MAP

This information provided by authority of Part 525, 1994 PA 451, as amended.

Sale Number

54 - 015

Year

23

Forest Management Unit  
AtlantaCounty  
MontmorencyMapped By Natzke  
Cruised By NatzkeDate  
05/19/2023

Page 1 of 1

Township  
31NRange  
02ESection(s) and Subdivision(s) Sec. 13: S2SE; Sec. 19: W2NW,  
NWSW; Sec. 24: N2NE, SENE, SE; Sec 25 N2NEScale  
1:15,840

## Cover Type

A = Aspen	H = Hemlock	N = Marsh	U = Upland Brush
B = Paper Birch	J = Jack Pine	O = Oak	UM = Upland Mixed
C = Cedar	L = Lowland Brush	P = Lowland Poplar	V = Bog or Marsh
D = Treed Bog	LM = Lowland Mixed	Q = Mixed Swamp Conifer	W = White Pine
E = Swamp Hdwoods	M = Mpl, Bch, Brch	R = Red Pine	X = Non Stocked
F = Spruce Fir	MC = Mixed Conifer	S = Black Spruce	Z = Water
G = Grass	MD = Mixed Deciduous	T = Tamarack	

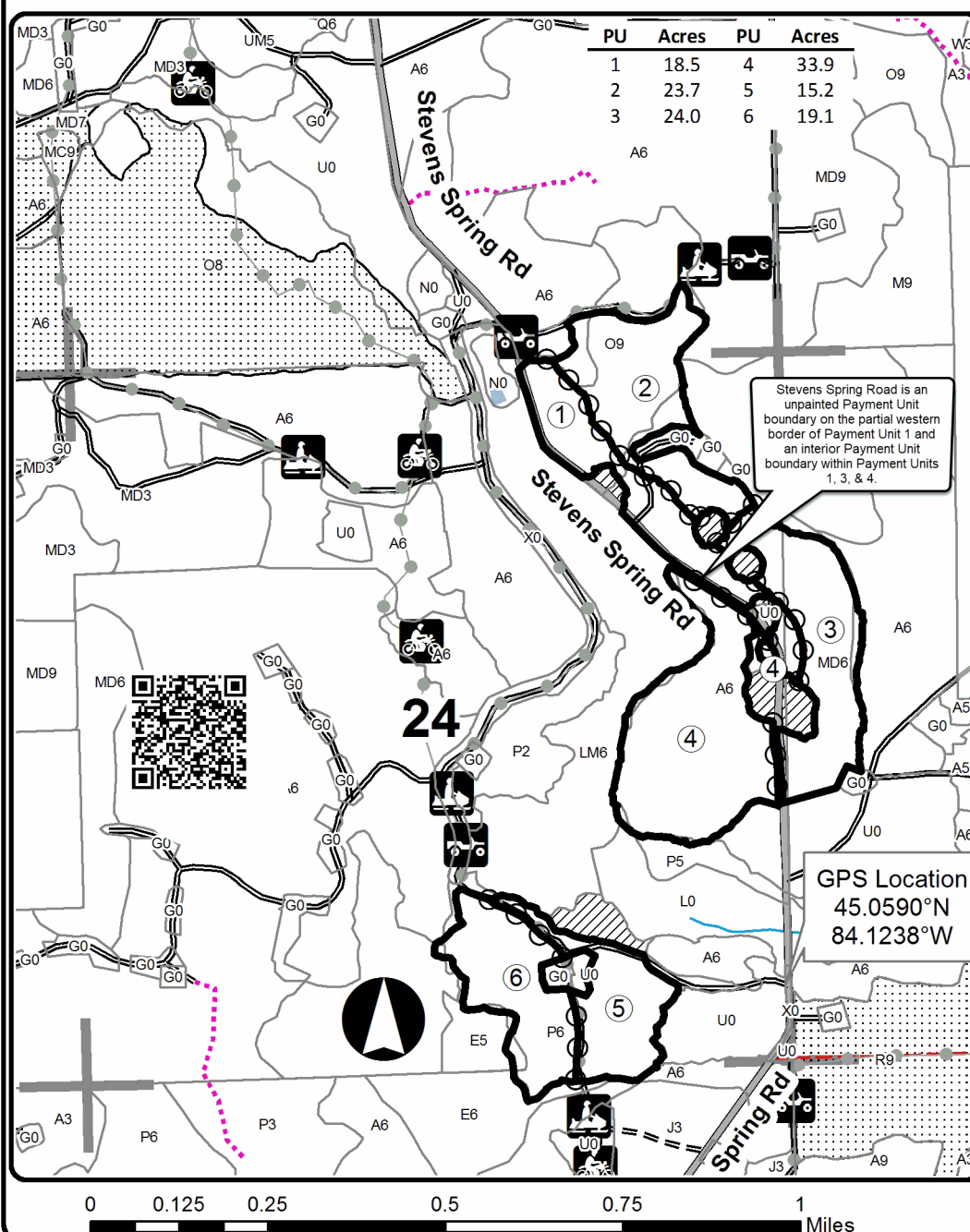
## Density

0 = Non Stocked	5 = Pole Timber Medium
1 = Seedling Sapling Poor	6 = Pole Timber Well
2 = Seedling Sapling Medium	7 = Saw Timber Poor
3 = Seedling Sapling Well	8 = Saw Timber Medium
4 = Pole Timber Poor	9 = Saw Timber Well

## Stevens Springs Eternal

Compartment46

134.4 Acres



- Against State (Red)
- Payment Unit (Yellow)
- Retention Area
- Nearby Timber Sales
- Stand Boundaries
- Recreational Trail
- Secondary Forest Road
- Forest Access Route
- Gravel Road
- County Road - Seasonal
- Private Road
- Temporary Management Access
- Motorcycle Trails
- ORV Routes
- Snowmobile Trails
- Perennial River
- Lakes and Rivers
- Section Corners

Locator Map  
1:150,000