



**DEPARTMENT OF NATURAL RESOURCES
STATE OF MICHIGAN
TIMBER SALE PROSPECTUS #7309**

SCHEDULED SALE DATE AND TIME: **2:00 p.m. (local time) on May 6, 2024.**

LOCATION: **GWINN MGMT UNIT, 410 WEST M 35, GWINN, MI 49841.**

CONTACT NAME: Mike Brodeur

PHONE NUMBER: (906) 346-9201

PROSPECTUS NOTE: The bidder is advised to inspect the sale area and review the location, estimated volumes, operating costs and contract terms of proposed sales. Please be aware that some landowners may request 60 days or more notice for access across their land.

Notice is hereby given that bids will be received by the Unit Manager, GWINN MANAGEMENT UNIT, for certain timber on the following described lands:

Yellow Brick Road (32-006-23) / T43N, R24W, SEC. 3 , N1/2NW,N1/2NE.

T44N, R24W, SEC. 34, S1/2NE,S1/2SW,SE.

T44N, R24W, SEC. 35, S1/2NE,SWSW,NESE.

Marquette County, Advertised Price \$69,396.05, 200.0 Acres, Aspen, Hardwood.

SALE NOTE: Access may be through private or other public land.

TIMBER SALE INFORMATION

Yellow Brick Road (32-006-23)

T43N, R24W, SEC. 3; T44N, R24W, SEC. 34; T44N, R24W, SEC. 35.

Marquette County (Advertised Price \$69,396.05)

SALE NOTE: Access may be through private or other public land.

A timber sale contract for this lump sum, sealed bid timber sale will be awarded to the responsible bidder offering the highest sealed bid price. All units of volume listed below were estimated using the Inventory Manager computer program and the new Michigan taper model. Bids must be at or above the following advertised price for each product and species:

<u>PRODUCTS & SPECIES</u>	<u>ESTIMATED UNITS*</u>	<u>ADVERTISED PRICE</u>
Sawtimber		
Basswood	0.7 MBF	\$ 28.00 / MBF
Paper Birch	9.1 MBF	\$ 60.00 / MBF
Red Maple	52.7 MBF	\$ 74.00 / MBF
Sugar Maple	17.2 MBF	\$ 116.00 / MBF
White Spruce	3.8 MBF	\$ 40.00 / MBF
Pulpwood		
Balsam Fir	309 Cords	\$ 10.30 / Cord
Basswood	2 Cords	\$ 6.10 / Cord
Mixed Aspen	1,342 Cords	\$ 19.80 / Cord
Mixed Hardwood	1,382 Cords	\$ 11.70 / Cord
Mixed Spruce	655 Cords	\$ 12.70 / Cord
Paper Birch	493 Cords	\$ 14.55 / Cord
Tamarack	91 Cords	\$ 14.90 / Cord

* The total volume is statistically estimated within plus (+) or minus (-) 9.69 percent. There are an estimated 4,462 cords on this timber sale, plus or minus 433 cords at the 95% confidence level. The estimated units are final and not subject to adjustment. Prospective bidders are urged to examine this timber and to make their own estimates of quantity and quality.

BOND AND PAYMENT SCHEDULE:

1. A bond in the amount of \$3,469.80 to insure faithful performance of the conditions of the contract will be deposited by the successful bidder within 21 days of the sale award.
2. Cutting in any sale or unit without the required advance payment would be considered a trespass.
3. Total payment must be paid in advance or according to the following schedule :
 - (a) Ten percent (10%) of the sale value must be paid within 21 days of the sale award.
 - (b) The 10% down payment will be credited towards the first unit cut.
 - (c) Payment for each of the following units must be made before cutting begins in that unit:

<u>PAYMENT UNIT NUMBER</u>	<u>PERCENT OF TOTAL SALE VALUE</u>
01	4.5%
02	4.0%
03	4.8%
04	1.6%
05	27.8%
06	3.5%
07	2.2%
08	5.2%
09	22.9%
10	14.1%
11	9.4%

4. If no cutting takes place, the 10% down payment will not be refunded.
5. Operations on the contract issued will terminate on 06/30/2027.

SALE STATISTICS

Volumes were calculated in cubic feet using the Michigan taper model. Cubic foot volume includes all wood inside bark for the product indicated. For display purposes, cubic feet were converted to cords and MBF using a simple conversion factor, e.g. 79 cubic feet per cord and 185 cubic feet per MBF. The cubic foot volumes are precise; the cords and MBF volumes are not. Cubic foot volume cannot be directly converted to cords or boards with precision.

SALE VOLUMES

The total estimated sale volume may not equal the sum of the species/products due to the nature of statistical calculations associated with double sampling methodology.

VOLUME			STATISTICAL RANGE IN CORDS	
TOTAL CUBIC FEET	TOTAL CORDS	PERCENT ERROR	MINIMUM	MAXIMUM
352,487	4,462	9.69%	4,029	4,895

VDU VOLUMES

A VDU is a Volume Determination Unit. Volumes and their associated statistics are calculated at the VDU level and summarized to the sale level. There is often a one to one relationship between a VDU and a Payment Unit, but not always, depending on the cruise design. Refer to the VDU TO PAYMENT UNIT table.

	VOLUME			RANGE IN CORDS	
VDU	TOTAL CUBIC FEET	TOTAL CORDS	PERCENT ERROR	MINIMUM	MAXIMUM
1	35,772	453	35.04%	294	611
2	128,053	1,621	16.11%	1,360	1,882
3	21,840	276	36.11%	177	376
4	92,636	1,173	19.22%	947	1,398
17	8,453	107	28.27%	77	137
23	14,049	178	71.13%	51	304
32	5,482	69	66.25%	23	115
37	26,137	331	21.79%	259	403
105	20,064	254	25.05%	190	318
TOTAL:	352,487	4,462		3,378	5,545

VDU TO PAYMENT UNIT

When a VDU is associated with more than one Payment Unit (PU), the VDU volumes are assigned to the PU based on acres of the VDU within the PU.

VDU	VDU ACRES	PU	PU ACRES
1	21.0	11	21.0
2	57.4	9	35.5
		10	21.9
3	10.2	8	10.2
4	44.7	5	44.7
17	6.1	7	6.1
23	13.7	6	13.7
32	2.5	4	2.5
37	28.3	2	12.9
		3	15.4
105	16.1	1	16.1
TOTAL:	200.0		200.0

DESCRIPTION OF TIMBER BY PU (PU)

PU	MARKET GROUP	PRODUCT	QUANTITY	UNIT	ACRES	ADVERTISE PRICE
1	Red Maple	Sawtimber	6.5	MBF	16.1	\$3,136.40
	Balsam Fir	Pulpwood	8	Cords		
	Mixed Aspen		9	Cords		
	<i>Quaking Aspen</i>		9	<i>Cords</i>		
	Mixed Hardwood		196	Cords		
	<i>Red Maple</i>		196	<i>Cords</i>		
	Mixed Spruce		8	Cords		
	<i>White Spruce</i>		8	<i>Cords</i>		
2	Basswood	Sawtimber	0.3	MBF	12.9	\$2,743.50
	Red Maple		7.3	MBF		
	Sugar Maple		7.8	MBF		
	Balsam Fir	Pulpwood	3	Cords		
	Basswood		1	Cords		
	Mixed Aspen		7	Cords		
	<i>Quaking Aspen</i>		7	<i>Cords</i>		
	Mixed Hardwood		92	Cords		
	<i>Red Maple</i>		50	<i>Cords</i>		
	<i>Sugar Maple</i>		42	<i>Cords</i>		
	Mixed Spruce		3	Cords		
	<i>White Spruce</i>		3	<i>Cords</i>		
3	Basswood	Sawtimber	0.4	MBF	15.4	\$3,310.10
	Red Maple		8.7	MBF		
	Sugar Maple		9.4	MBF		
	Balsam Fir	Pulpwood	3	Cords		
	Basswood		1	Cords		
	Mixed Aspen		9	Cords		
	<i>Quaking Aspen</i>		9	<i>Cords</i>		
	Mixed Hardwood		111	Cords		
	<i>Red Maple</i>		60	<i>Cords</i>		
	<i>Sugar Maple</i>		51	<i>Cords</i>		
	Mixed Spruce		4	Cords		
	<i>White Spruce</i>		4	<i>Cords</i>		
4	Paper Birch	Sawtimber	0.9	MBF	2.5	\$1,105.65
	Red Maple		2.0	MBF		
	Balsam Fir	Pulpwood	2	Cords		
	Mixed Hardwood		22	Cords		
	<i>Red Maple</i>		22	<i>Cords</i>		
	Paper Birch		43	Cords		
5	Red Maple	Sawtimber	10.2	MBF	44.7	\$19,255.85
	Balsam Fir	Pulpwood	36	Cords		
	Mixed Aspen		536	Cords		
	<i>B. T. Aspen</i>		175	<i>Cords</i>		
	<i>Quaking Aspen</i>		361	<i>Cords</i>		
	Mixed Hardwood		454	Cords		
	<i>Red Maple</i>		450	<i>Cords</i>		
	<i>Yellow Birch</i>		4	<i>Cords</i>		
	Mixed Spruce		74	Cords		
	<i>White Spruce</i>		74	<i>Cords</i>		
	Paper Birch		87	Cords		
6	Balsam Fir	Pulpwood	18	Cords	13.7	\$2,445.85
	Mixed Aspen		22	Cords		
	<i>Quaking Aspen</i>		22	<i>Cords</i>		
	Mixed Spruce		13	Cords		
	<i>Black Spruce</i>		9	<i>Cords</i>		
	<i>White Spruce</i>		4	<i>Cords</i>		

DESCRIPTION OF TIMBER BY PU (PU), CON'T

PU	MARKET GROUP	PRODUCT	QUANTITY	UNIT	ACRES	ADVERTISE PRICE
6 con't	Paper Birch	Pulpwood	111	Cords		
	Tamarack		3	Cords		
7	Mixed Spruce	Pulpwood	46	Cords	6.1	\$1,508.00
	<i>Black Spruce</i>		46	<i>Cords</i>		
	Tamarack		62	Cords		
8	Paper Birch	Sawtimber	1.8	MBF	10.2	\$3,642.80
	Mixed Aspen	Pulpwood	46	Cords		
	<i>B. T. Aspen</i>		46	<i>Cords</i>		
	Mixed Spruce		158	Cords		
	<i>Black Spruce</i>		158	<i>Cords</i>		
	Paper Birch		24	Cords		
	Tamarack		18	Cords		
9	Paper Birch	Sawtimber	4.0	MBF	35.5	\$15,876.10
	Red Maple		11.1	MBF		
	White Spruce		2.3	MBF		
	Balsam Fir	Pulpwood	92	Cords		
	Mixed Aspen		344	Cords		
	<i>Quaking Aspen</i>	<i>Sawtimber</i>	1.6	<i>MBF</i>		
	<i>B. T. Aspen</i>	<i>Pulpwood</i>	171	<i>Cords</i>		
	<i>Balsam Poplar</i>		15	<i>Cords</i>		
	<i>Quaking Aspen</i>		155	<i>Cords</i>		
	Mixed Hardwood		289	Cords		
	<i>Red Maple</i>		285	<i>Cords</i>		
	<i>Yellow Birch</i>		4	<i>Cords</i>		
	Mixed Spruce		125	Cords		
	<i>Black Spruce</i>	<i>Sawtimber</i>	4.9	<i>MBF</i>		
	<i>Black Spruce</i>	<i>Pulpwood</i>	109	<i>Cords</i>		
	<i>White Spruce</i>		6	<i>Cords</i>		
	Paper Birch		132	Cords		
	Tamarack		5	Cords		
10	Paper Birch	Sawtimber	2.4	MBF	21.9	\$9,817.40
	Red Maple		6.9	MBF		
	White Spruce		1.5	MBF		
	Balsam Fir	Pulpwood	57	Cords		
	Mixed Aspen		213	Cords		
	<i>Quaking Aspen</i>	<i>Sawtimber</i>	1.0	<i>MBF</i>		
	<i>B. T. Aspen</i>	<i>Pulpwood</i>	106	<i>Cords</i>		
	<i>Balsam Poplar</i>		9	<i>Cords</i>		
	<i>Quaking Aspen</i>		96	<i>Cords</i>		
	Mixed Hardwood		178	Cords		
	<i>Red Maple</i>		176	<i>Cords</i>		
	<i>Yellow Birch</i>		2	<i>Cords</i>		
	Mixed Spruce		77	Cords		
	<i>Black Spruce</i>	<i>Sawtimber</i>	3.1	<i>MBF</i>		
	<i>Black Spruce</i>	<i>Pulpwood</i>	67	<i>Cords</i>		
	<i>White Spruce</i>		4	<i>Cords</i>		
	Paper Birch		82	Cords		
	Tamarack		3	Cords		
11	Balsam Fir	Pulpwood	90	Cords	21.0	\$6,554.40
	Mixed Aspen		156	Cords		
	<i>B. T. Aspen</i>		146	<i>Cords</i>		
	<i>Quaking Aspen</i>		10	<i>Cords</i>		
	Mixed Hardwood		40	Cords		
	<i>Red Maple</i>		40	<i>Cords</i>		
	Mixed Spruce		147	Cords		

DESCRIPTION OF TIMBER BY PU (PU), CON'T

PU	MARKET GROUP	PRODUCT	QUANTITY	UNIT	ACRES	ADVERTISE PRICE
11 con't	<i>Black Spruce</i>	<i>Pulpwood</i>	<i>141</i>	<i>Cords</i>		
	<i>White Spruce</i>		<i>6</i>	<i>Cords</i>		
	Paper Birch		14	Cords		
TOTAL:			83.5	MBF		
TOTAL:			4,274	Cords		

Sale Specific Conditions & Requirements

Sale Name: Yellow Brick Road

Sale Number: 32-006-23 Seq#: 2

1 - Sale Area

1.2 - Boundaries

1.2.1 - Painted boundaries (9/19)

The sale boundary and Payment Unit boundaries are marked and identified by blue, red, and yellow paint. Exterior sale boundary lines against private are marked with blue paint. Exterior sale boundary lines against state are marked with red paint. Interior Payment Unit boundaries are marked with yellow paint, with the exception of the interior Payment Unit boundary separating Payment Units 1 & 2, which is marked with red paint. The painted boundary line trees are not Included Timber and are to be protected unless marked with orange paint. Yellow painted trees designating an interior Payment Unit boundary are only to be cut when all surrounding Payment Units have been paid. These yellow painted trees are designated for cutting in all adjoining Payment Units.

2 - Timber Specifications

2.1 - Included Timber

2.1.1 - Clearcut unit(s) with unmerchantable trees (6/14)

Within Payment Unit(s) 7-11, cut all trees that are two (2) inches or more at DBH, except do not cut any cedar, hemlock, or pine.

2.1.3 - Cut tree marked unit(s) (12/08)

Within Payment Unit(s) 2 & 3, all trees are designated for cutting when marked with orange paint above and below stump height, regardless of merchantability. In addition, cut all merchantable spruce and fir.

2.1.4 - Designated timber unit(s) (6/17)

Within Payment Unit(s) 1, 4, & 5, all red maple, aspen, spruce, fir, and paper birch trees are designated for cutting which meet minimum piece specifications in 2.2 Utilization. Additionally, do not cut any trees marked in green paint above and below stump height.

Within Payment Unit 6, aspen, spruce, fir, tamarack, and paper birch are designated or cutting which meet minimum piece specifications in 2.2 Utilization. Additionally, do not cut any trees marked with green paint above and below stump height.

3 - Payments

3.4 - Damaged Timber

3.4.1 - Damaged timber (7/16)

General Condition and Requirement 3.4 Damaged Timber, defines liquidated damages for undesignated live merchantable trees which are cut or injured. No damage is acceptable to undesignated live merchantable trees. Within the Sale Area, if more than 5% of trees (> 4.5" DBH) within a specified area of the sale are damaged, liquidated damages will be assessed for all trees damaged. Rates will be in accordance with General Condition and Requirement 3.4 Damaged Timber.

4 - Transportation

4.1 - Construction

4.1.3 - Slash and earthen piles (8/04)

Piles or windrows of earth along roads and landings that have been widened or constructed shall be leveled. Slash from road maintenance or construction, including stumps, shall be dispersed throughout the sale.

4.1.4 - Timber removed for construction (3/23)

Trees cut or damaged in the process of pre-approved road, landing or skid trail construction will be decked in an area separate from other Designated Timber and not removed until measured by the sale administrator. Payment will be made at contract prices or average prices, if not on the contract.

4.1.6 - Road construction (1/09)

Construction of new roads or improvements of existing roads shall be done in such a way as to minimize the environmental and visual impacts. Merchantable trees shall be cut and utilized unless otherwise directed. Non-merchantable trees shall be severed and laid flat on the ground. Slash shall be scattered, and not left in windrows and kept a minimum of 10 feet back from the road edge. Stumps shall be set upright, not left on edge, and be moved at least 10 feet away from the road edge. Disturbed soil shall be feathered into the woods and not left in berms or windrows.

4.1.7 - Road closure (10/11)

All new roads built into the sale must be blocked to vehicle traffic upon completion of the sale. Overgrown roads that are reopened shall be considered new roads. In general, this will require constructing a four (4') foot high berm of stumps and logs covered with earth. Contact the Sale Administrator for specific details of design and placement.

4.2 - Maintenance

4.2.2 - Fill material (4/07)

To maintain roads, fill material may be needed in areas where "holes" exist or may be expected to develop. This fill material should be placed before trucking begins. Depending on the time of year, multiple areas may require fill material for access across the Sale Area. Contact the Sale Administrator regarding the availability of onsite sand or gravel from adjacent State-owned lands.

4.2.3 - Road maintenance (8/13)

The following road maintenance may be needed: Within 60 days of completion of hauling, or if no hauling occurs for 60 days, the road must be maintained and graded. This includes cleaning of drainage areas, grading, crowning and filling with gravel, if necessary. Damages will be assessed if grading/repair does not occur.

4.2.4 - Grading (10/16)

For completion of the sale, state forest roads must be graded. In general, this will require a road grader or bulldozer to shape up the roads after forest products have been hauled off site. This includes cleaning of drainage areas, grading, crowning and filling with gravel, if necessary. The grading equipment to be used must be approved by the Unit Manager or his/her representative.

4.4 - Access

4.4.1 - Private property access (3/11)

Permission for access across private land is the responsibility of the Purchaser. Contact the Sale Administrator to assist with private property access.

4.4.3 - Access gate (12/08)

The access gate must be locked at the completion of each day, unless otherwise approved by the Unit Manager or his/her representative.

5 - Operations

5.1 - Notification

5.1.1 - Pre-sale conference (10/16)

A pre-sale conference between the Purchaser and sale administrator is required prior to beginning any operations. The Unit Manager or his/her representative must be contacted at least 3 business days in advance to schedule the conference.

5.2 - Conduct of Operations

5.2.3 - Operating Restrictions

5.2.3.1 - Operating restrictions (9/11)

Within Payment Unit(s) 7-11, unless changed by written agreement, cutting, skidding, and hauling are limited to the period of 12/15 to 4/1. This restriction is because of wet soils.

5.2.3.3 - Bark slippage restriction (3/09)

Within Payment Unit(s) 2 & 3, unless changed by written agreement, cutting and skidding are not permitted during the period of April 15 to July 15. This restriction is because of bark slippage.

5.2.22 - Operating Caution

5.2.22.1 - Operating caution (6/11)

It is recommended, but not required, that within Payment Unit(s) 5 & 6, cutting, skidding, and hauling occur during dry summer or frozen winter conditions. The reason for the recommendation is due to wet areas within these Payment Units.

5.2.32 - Decking/landing restoration (9/13)

All decking and landing areas must have the surface area restored to a condition equal to or better than before. This is to ensure the proper regeneration of the stand. Wood debris, chips and "cookies" from trimmings must be removed or scattered away from landing and loading areas and may not be windrowed on the edge.

5.2.38 - No decking against live trees (2/04)

Cut products may not be decked against unmarked or designated leave trees.

5.4 - Soil Protection

5.4.1 - Rutting restriction, general (7/16)

Operations are to cease immediately if equipment and weather conditions result in rutting of roads and/or skid trails which is 12 inches or greater in depth and 50 feet in length. The Unit Manager or his/her representative may restrict hauling and/or skidding if ruts exceed the specified depth. With the Unit Manager or his/her representative's approval, the Purchaser may return to the area when the risk of rutting has decreased.

5.4.2 - Skid trails (2/04)

Skid trails up and down slopes should be avoided. If however this is unavoidable, these trails will be left in a non-erodible condition using water bars, logs, and slash. Placing of slash on these skid trails while logging is ongoing may alleviate need for any further action. At the direction of the sale administrator, seed, fertilizer, and mulch may also be required.

5.8 - Protection of Endangered Species

5.8.5 - Protection of raptor nests (3/13)

All trees with raptor nests will be protected if found during harvesting operations. Notification will be made to the Unit Manager or his/her representative who will notify the Wildlife Biologist so an on-site evaluation and recommendation can be made, if necessary.

6 - Safety and Fire Prevention

6.2 - Signing

6.2.1 - Road posting (10/20)

The Purchaser is responsible for posting and maintaining caution signs on County Road RM prior to beginning operations. The road must be posted at appropriate distances from the Sale Area from both directions to warn of logging activity and truck traffic. Signs must be removed when harvest operations are suspended or completed. The Purchaser will provide these signs.

7 - Other Conditions

7.5 - Loss

7.5.1 - Deteriorating timber (7/09)

The sale area has received damage from spruce budworm. The Purchaser should harvest the wood as soon as possible. The Department of Natural Resources is held free of responsibility of any further damage or deterioration due to delay in harvesting.

**TIMBER SALE MAP**

This information provided by authority of Part 525, 1994 PA 451, as amended.

Sale Number
32-006-23Date
09/19/2023

Forest Management Unit

County

Mapped By: Brolin

Scale

Page

Of

Gwynn Mgt Unit

Marquette

Cruised By: Brolin, Gould, Holodnick

1:24,000

1

1

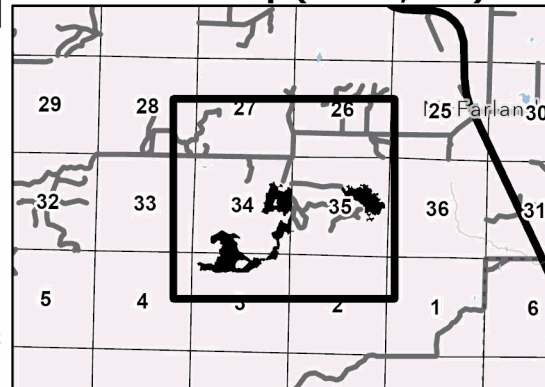
Township
43N / 44NRange
24WSection(s) and
Subdivision(s) Sec. 3 N1/2NW,N1/2NE; Sec. 34 S1/2NE,S1/2SW,SE; Sec. 35 S1/2NE,SWSW,NESE;**Cover Type**

A = Aspen	J = Jack Pine	O = Oak	U = Upland Brush
B = Paper Birch	K = Rock	P = Lowland Poplar	UM = Upland Mix Forest
C = Cedar	L = Lowland Brush	Q = Mixed Swamp Conifer	V = Bog or Marsh
D = Treed Bog	LM = Lowland Mix Forest	R = Red Pine	W = White Pine
E = Swamp Hardwoods	M = Maple, Beech, Birch	S = Black Spruce	X = Non Stocked
F = Spruce/Fir	MC = Mixed Conifer	T = Tamarack	Y = Sand
G = Grass	MD = Mixed Deciduous		Z = Water
H = Hemlock	N = Marsh		

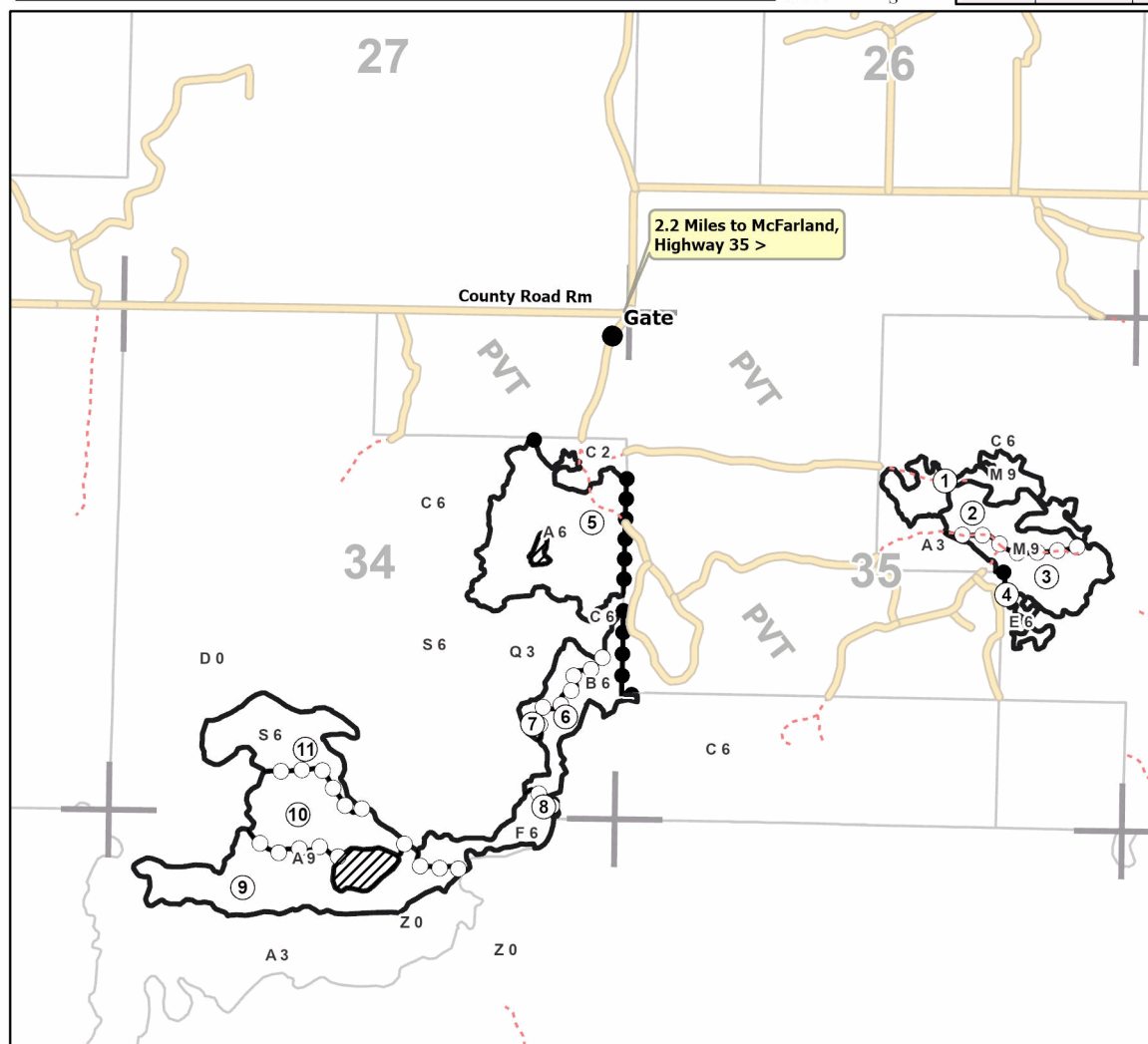
Density

0 = Non Stocked	5 = Pole Timber Medium
1 = Seedling Sapling Poor	6 = Pole Timber Well
2 = Seedling Sapling Medium	7 = Saw Timber Poor
3 = Seedling Sapling Well	8 = Saw Timber Medium
4 = Pole Timber Poor	9 = Saw Timber Well

PU #	Acres	PU #	Acres	PU #	Acres
1	16.1	5	44.7	9	35.5
2	12.9	6	13.7	10	21.9
3	15.4	7	6.1	11	21
4	2.5	8	10.2		

Yellow Brick Road
200.0 Acres**Locator Map (1:125,000)**

0 0.38 0.75 1.5 Miles

**Legend**

- Against State (Red)
- Payment Unit (Yellow)
- Private Line (Blue)
- Retention Areas
- Primary Forest Road
- Secondary Forest Road
- Forest Access Route
- Administrative Access Only
- Non-DNR Road
- MIRIS Section Corner

Use QR Code to open Map in App

